



KYGnus

SICHER . EFFIZIENT . NACHHALTIG

RMS

AI-Powered Diagnostic Tools for Modern Healthcare

"Fast, Portable, and – Developed bei Doctors for Doctors."

ABOUT OUR PLATFORM

RMS Cancer is a set of smart, AI-powered tools that help doctors detect and classify different types of cancer quickly and reliably.

This software was built by a team of medical experts and AI specialists who understand what doctors need in real clinical situations. RMS doesn't replace the doctor – it supports them.





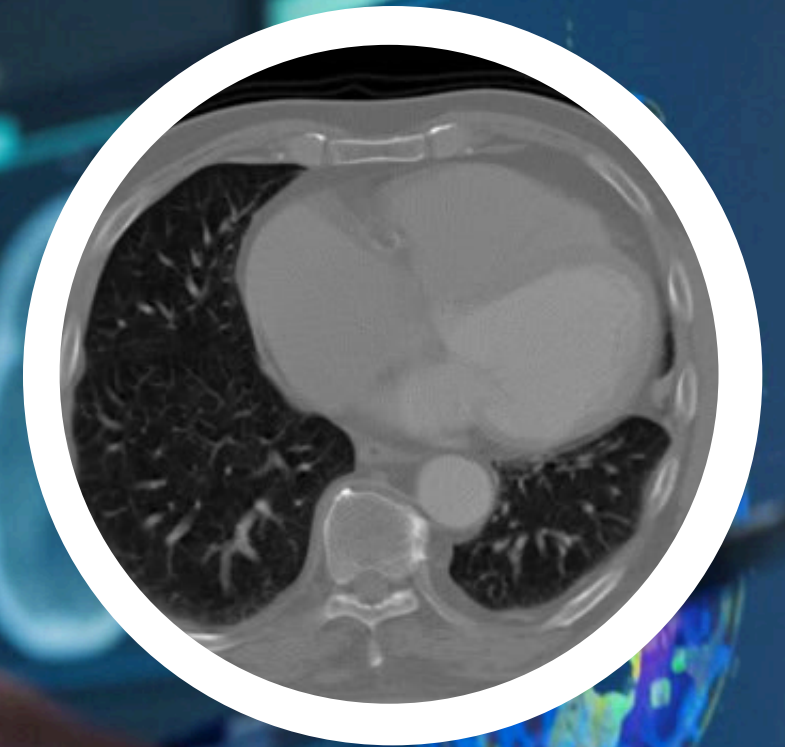
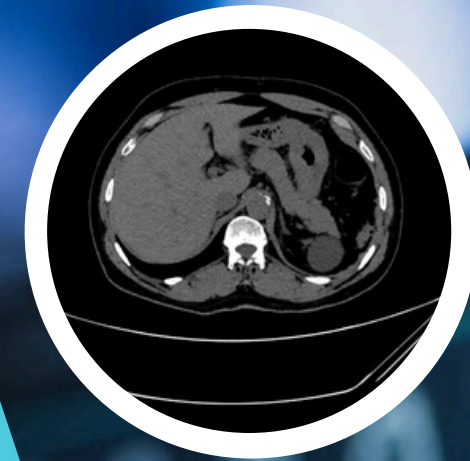
HOW IT HELPS?

- Supports early cancer detection by analyzing medical images (like mammograms, ultrasounds, blood data, etc.)
- Saves time by delivering results in seconds
- Reduces stress in decision-making with clear AI suggestions
- Works anywhere, even from a USB stick, no installation needed
- Fully private, no cloud, all data stays local

OUR PLATFORM INCLUDES

Diagnostic Assistance Available For:

- Breast Cancer
- Leukemia
- Lung Cancer
- Brain Tumors
- Kidney Disease
- And more — customizable based on your configuration needs



WHY OUR PLATFORM?

RMS combines the freedom of open source with the reliability of commercial-grade support.

1

Open Source

RMS Cancer is fully open source — that means:

- The source code is publicly available and can be reviewed by hospitals, IT staff, or independent experts.
- No hidden functions, no black-box algorithms.
- It creates full transparency and trust, especially in sensitive medical environments.

2

Built-in Security

- All data stays local — no cloud or internet connection is required.
- The system uses an integrated firewall module, which ensures:
 - No original patient data ever leaves the device (not even in binary form).
 - Only anonymized results are produced.

3

Simple Licensing – No Lock-in

- You own the software you use.
- No complex subscriptions or platform restrictions.
- One transparent license per clinic or practice, plus optional support.
- If needed, your IT team can verify, customize, or extend the software.



HOW IT WORKS

Step 1: Input – A Medical Image

The doctor opens the RMS Cancer tool and simply loads an image file (e.g., mammography, ultrasound, CT scan, etc.).

- Supported formats: DICOM, PNG, JPG, TIFF
- Works on existing hospital systems – no special hardware needed

Step 2: AI-Powered Analysis

The image is processed by a deep-learning model trained on real clinical datasets.

- Identifies signs of cancer with high precision
- Designed to support fast decision-making for medical professionals

Step 3: Instant Result

In less than one second, the software delivers its result:

- Normal: No suspicious findings detected
- Suspicious: Possible abnormality found (e.g., tumor, lesion)

Doctors can optionally view visual markers like heatmaps showing the AI's focus areas.

openSUSE Medical

Dashboard

Breast Cancer

Breast Cancer Ultrasound

Lung Cancer

Kidney Disease

Breast Cancer ML

Brain Tumor Detection

Acute Lymphoblastic Leukemia

CSV Data Table

contact

ACCOUNT PAGES

Logout

website

App GitHub

Kidney Disease Detection

File Upload



Kidney Disease Detection Result

Result : Cyst

OPTIONAL SYSTEM PACKAGE – EVERYTHING READY TO USE

No Operating System? No Problem.

If your clinic or practice does not yet have a suitable system, we offer a complete pre-configured solution:

RMS System Package

- ✓ Lightweight Linux OS for medical use
- ✓ Pre-installed cancer diagnosis application
 - ✓ Built-in medical-grade antivirus
 - ✓ Secure and ready to use

Built-in Antivirus for Data Protection

We understand that patient data security is critical. That's why our system comes with a custom antivirus developed for medical environments.

BUILT-IN ANTIVIRUS FOR DATA PROTECTION

Built-in Antivirus ensures two levels of protection:

1. Output Sanitization – No Leaks from Input

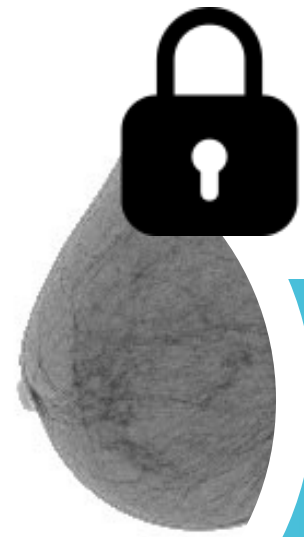
- The antivirus monitors the diagnostic software itself
- It guarantees that no sensitive data (like patient information, images, or metadata) ever leaks into the output – not even in binary or hidden formats
- Outputs are always anonymized and stripped of identifying data

2. System Isolation – Protection from Other Apps

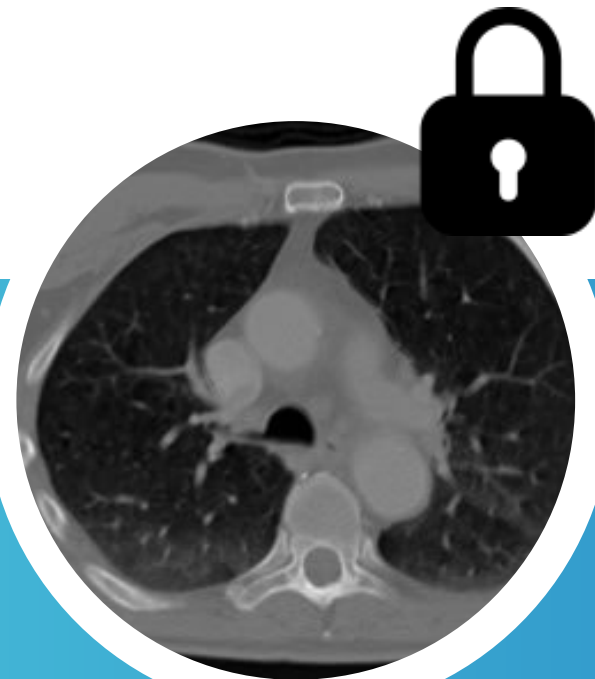
- If your staff installs other programs later (e.g., browsers, office tools), the antivirus isolates the RMS system
- These apps cannot access patient data, diagnosis history, or medical logs
- Even in the case of malware or phishing attempts, sensitive data is shielded

LOCAL PROCESSING , HIGH SECURITY & EASY INTEGRATION

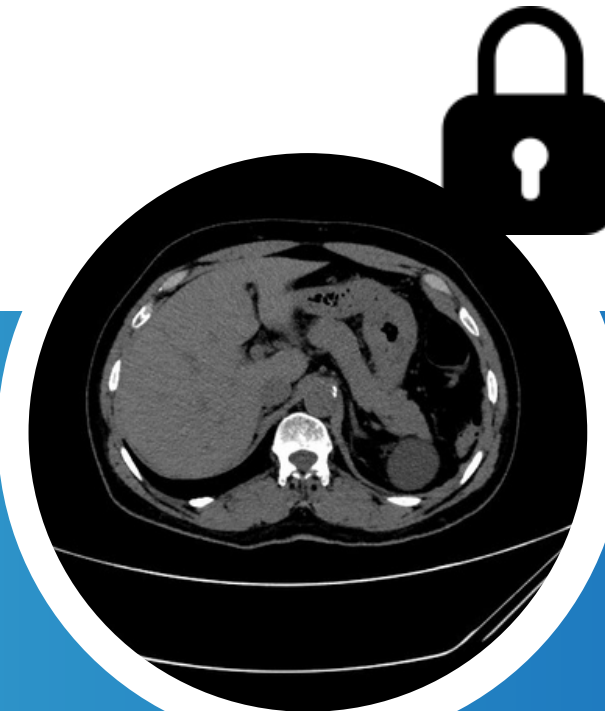
- Plug in the device or install the package – done in minutes
- Works without internet access
- Perfect for clinics with strict IT rules or minimal infrastructure



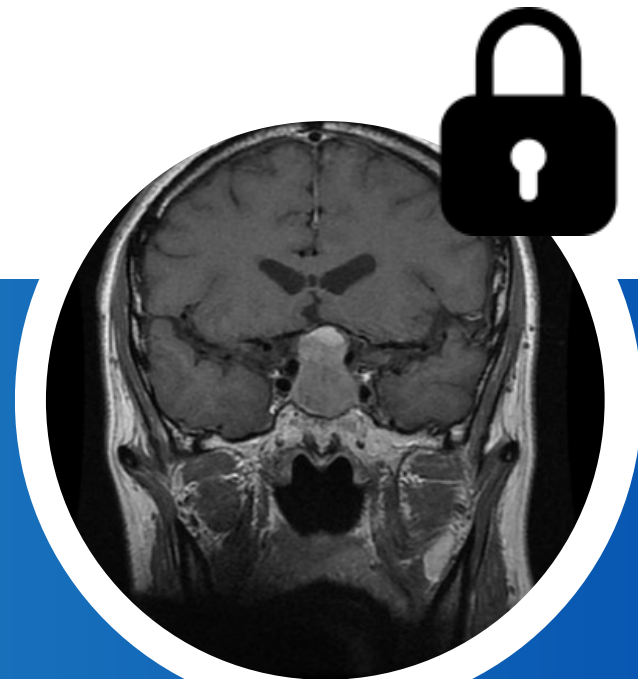
Breast Cancer



Lung Cancer



Kidney Disease



Brain Tumors

SUMMARY: WHY CHOOSE RMS CANCER DIAGNOSTIC TOOL?

The RMS cancer diagnosis application is designed by doctors for doctors, combining medical expertise with the power of modern AI to support faster and safer cancer detection.

Simple to Use – No IT Hassle

- Plug-and-play setup, even from a USB stick
- Intuitive interface – minimal training required
- Available as standalone software or full system package with Linux + antivirus

AI That Assists – Not Replaces

- RMS analyzes medical images (e.g., MRI, CT, X-ray) in under one second
- Supports specialists with instant feedback on possible abnormalities
- Designed to fit into the clinical workflow, not disrupt it

Open Source & Transparent

- 100% of the code is visible and verifiable
- No hidden processes – full control for hospitals and IT teams
- Builds trust and simplifies regulatory approval

Secure & Local

- Runs entirely offline, on local computers or servers
- No cloud connection needed → no data ever leaves your clinic
- Optional antivirus ensures patient data never leaks, even in binary form

Customizable & Extendable

- Need a special module? We can build it for you
- Want integration into your PACS or HIS? We adapt the system
- RMS grows with your individual needs

Thank You!

Feel free to reach out with any questions.
We look forward to hearing from you.

Phone number
0176 82086 406

E-Mail
tamizieliasofficial@gmail.com

Website:
kygnus.github.io

